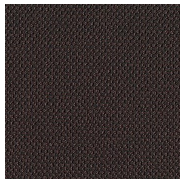


Element (4Z)

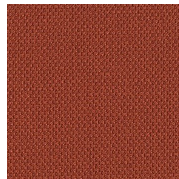
Seating Upholstery | Grade B



Earth
4Z-ER



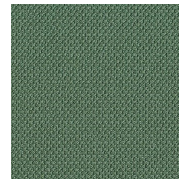
Essence
4Z-ES



Fire
4Z-FR



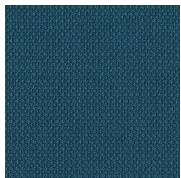
Fossil
4Z-FS



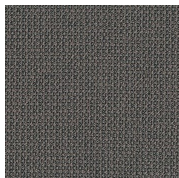
Herbal
4Z-HR



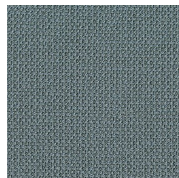
Logic
4Z-LG



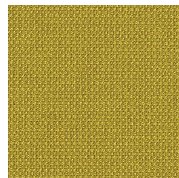
Lyrical
4Z-LY



Pillar
4Z-PL



Poetic
4Z-PT



Rare
4Z-RR



Root
4Z-RT



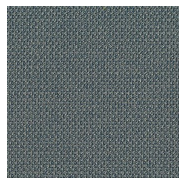
Scenic
4Z-SC



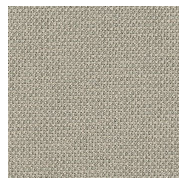
Thread
4Z-TH



Timeless
4Z-TM



Truth
4Z-TR



Wind
4Z-WN

HAWORTH

Element (4Z)

Specifications

Color Code	Color Name
4Z-ER	Earth
4Z-ES	Essence
4Z-FR	Fire
4Z-FS	Fossil
4Z-HR	Herbal
4Z-LG	Logic
4Z-LY	Lyrical
4Z-PL	Pillar
4Z-PT	Poetic
4Z-RR	Rare
4Z-RT	Root
4Z-SC	Scenic
4Z-TH	Thread
4Z-TM	Timeless
4Z-TR	Truth
4Z-WN	Wind

Details

Brand	N/A
Grade	B
Program	Standard

Technical Information

Composition	WOVEN
Content	24% RAYON
Content	76% POST CON RECYCLED POLY
Width	54 in
Pattern Repeat H	0.01 in
Pattern Repeat V	NO REPEAT
Directional	Yes
Image Shown	Downroll
Abrasion	100,000
Weight (Per Linear Yard)	24 OZ
Lightfastness	GRADE 4.5
Backing	Yes
Flammability	TB117-2013



Haworth fabrics meet or exceed ACT Standards

All colorways are subject to dye lot variation

HAWORTH is a registered trademark of Haworth, Inc.

© Haworth, Inc. All right reserved. 2020 6.20

haworth.com/surfaces | 800 344 2600

For additional information or product availability go to surfaces.haworth.com Technical information subject to change.

HAWORTH is a registered trademark of Haworth, Inc.

© Haworth, Inc. All right reserved. 2020 6.20

haworth.com/surfaces | 800 344 2600