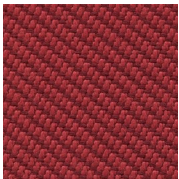
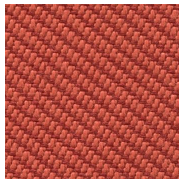


Oceanic (4T)

Seating Upholstery | Grade C



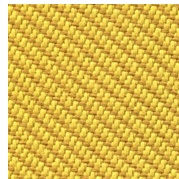
Abyss
4T-AB



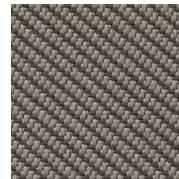
Aquatic
4T-AC



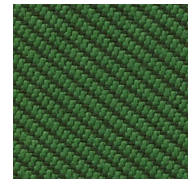
Atoll
4T-AT



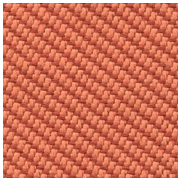
Barrier
4T-BR



Bay
4T-BY



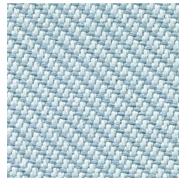
Coast
4T-CS



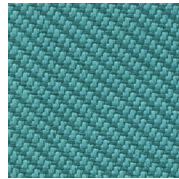
Coral
4T-CR



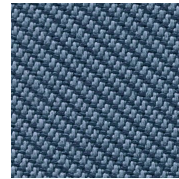
Flotsam
4T-FL



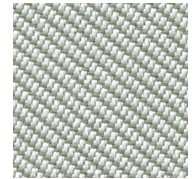
Gulf
4T-GL



Jetsam
4T-JT



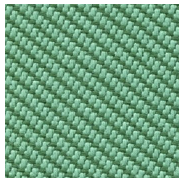
Neptune
4T-NP



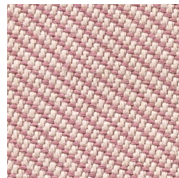
Paddle
4T-PD



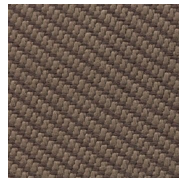
Riptide
4T-RP



Sea
4T-SE



Seafarer
4T-SF



Shore
4T-SH

HAWORTH

Oceanic (4T)

Specifications

Color Code	Color Name
4T-AB	Abyss
4T-AC	Aquatic
4T-AT	Atoll
4T-BR	Barrier
4T-BY	Bay
4T-CS	Coast
4T-CR	Coral
4T-FL	Flotsam
4T-GL	Gulf
4T-JT	Jetsam
4T-NP	Neptune
4T-PD	Paddle
4T-RP	Riptide
4T-SE	Sea
4T-SF	Seafarer
4T-SH	Shore

Details

Brand	N/A
Grade	C
Program	Standard

Technical Information

Composition	WOVEN
Content	100% POST CON RECYCLED POLY
Content	INCLUDING 50% SEAQUAL
Width	54 in
Pattern Repeat H	NO REPEAT
Pattern Repeat V	NO REPEAT
Directional	Yes
Image Shown	Downroll
Abrasion	100,000
Weight (Per Linear Yard)	14.75 OZ/LY
Lightfastness	CLASS 4 @ 40 HRS
Backing	No
Flammability	TB117-2013



Haworth fabrics meet or exceed ACT Standards

All colorways are subject to dye lot variation

HAWORTH is a registered trademark of Haworth, Inc.

© Haworth, Inc. All right reserved. 2020 6.20

haworth.com/surfaces | 800 344 2600

For additional information or product availability go to surfaces.haworth.com Technical information subject to change.

HAWORTH is a registered trademark of Haworth, Inc.

© Haworth, Inc. All right reserved. 2020 6.20

haworth.com/surfaces | 800 344 2600