

HAWORTH

# Government of Canada Standing Offer Design Solutions

2025

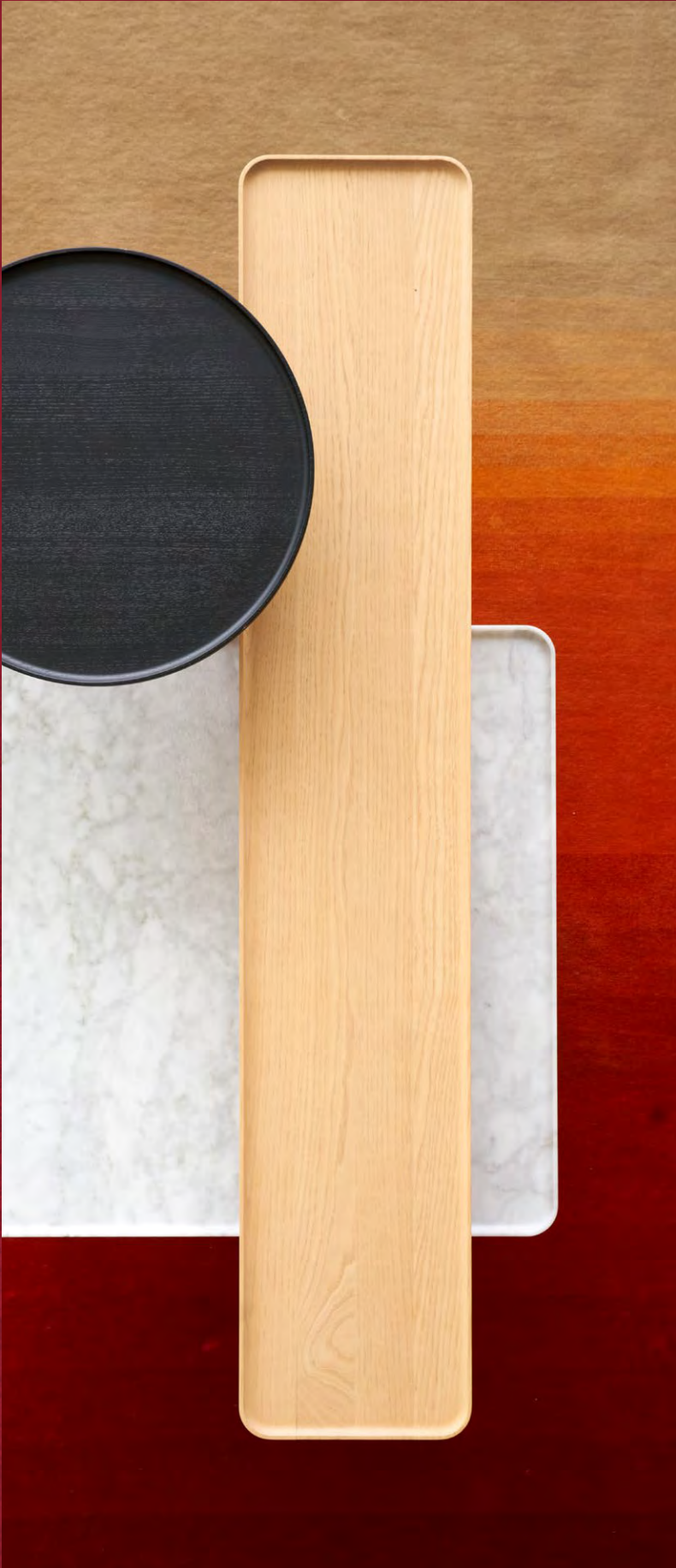
Contract Number: EP929-230916





# Contents

Category 1	09
Category 2	15
Category 3	20
Category 4	24
Category 5	26
Category 6	31



## Workspaces

Not everyone needs the same type of workspace. Preference sets are unique to individuals and groups. Work itself varies from task to task. Innovation requires a combination of focus and collaborative activities. It's important to create varied spaces within the work environment, so people can choose which best accommodates their needs.

## Ancillary

Ancillary spaces, made up of versatile residential-feeling furniture, are essential for shaping an organization's culture and supporting people's needs for collaboration. These dynamic areas, designed for flexibility and social interaction, elevate the office experience, and improve the overall well-being of employees.

**For Standing Offer inquiries, please contact:**

**Melissa Lepore**  
Territory Sales Manager  
melissa.lepore@haworth.com  
613.889.3948

For a current list of Haworth Dealers please refer [here](#)



# About Haworth

At Haworth, we believe great spaces empower people to thrive and work their best. As a leading global furniture maker established in 1948, we are steeped in workplace expertise that fuels innovative designs for optimal performance. Our customer-first approach comes from our entrepreneurial spirit, design-forward thinking, and global, multicultural perspectives.



GLOBAL PRESENCE  
**35+ Years**

AVG. GLOBAL SALES  
**\$2+ Billion**

EMPLOYEES WORLDWIDE  
**8000**

DEALERS  
**650**

GLOBAL MFG PLANTS  
**17**

PRESENCE IN  
**170+**  
COUNTRIES

**Zero Waste**  
GLOBALLY SINCE 2012





# Values-Driven Organization

Our values define our behavior and inform our decisions, guiding today’s activities and tomorrow’s growth—in the global markets we serve and the communities where we live. First drafted in 1975 by Chairman Emeritus Dick Haworth, our values have been modified several times to suit change happening in the world and our evolving business.

**Our Values**

- We listen to our Customers.
- We rely on our Members.
- We honor Integrity.
- We embrace Continuous Learning.
- We lead with Design.
- We create Value.
- We work to make the World better.

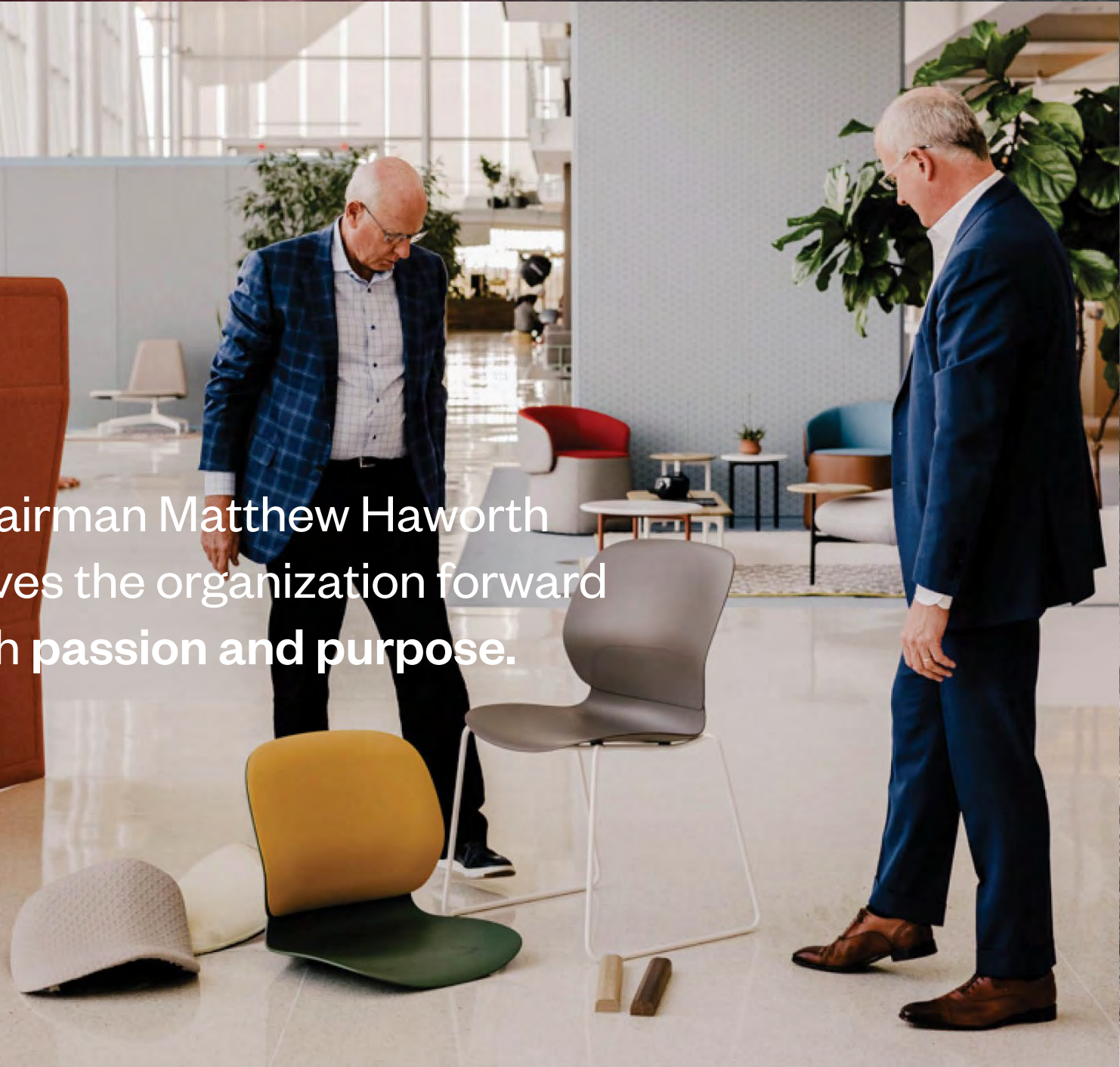


Our confidence, stability, and agility come from three generations of the Haworth family, along with professional leadership like President and CEO Franco Bianchi.





Chairman Matthew Haworth  
drives the organization forward  
with passion and purpose.



**Dick Haworth**  
Chairman Emeritus

**Matthew Haworth**  
Chairman

# What Makes us Different?

There are many reasons to choose Haworth, but three distinct pillars of our company set us apart. These three elements, acting together, position us to serve the Canadian Federal Government like no one else.

1

## Entrepreneurial

As a values-driven company since 1948, we pursue the long-term horizon. Our entrepreneurial spirit, professional leadership, passion for innovation, and accountability drive us to make investments for the future to benefit our clients, members, and communities.

2

## Design Forward

We partner with respected research institutions, leading architects, and renowned designers to uncover insights and evaluate the latest trends. We apply this collaborative knowledge and share ideas globally to deliver the best in design performance and desire.

3

## Multicultural

As a global, multicultural organization, we embrace the perspective that comes from diversity of experiences.





# Corporate Responsibility

## Overview

Sustainability has been a long-held company-wide value at Haworth. We think beyond our business with a collective purpose to make the world better, initiating manufacturing and design processes that have a neutral or positive impact on the planet.

Our manufacturing facilities globally are certified to ISO 9001 and 14001 and are also Zero Production Waste to Landfill. We engage and empower our members in more sustainable practices and utilize resources in ways that promote healthy, adaptable, and sustainable client spaces around the globe.

We understand that becoming a sustainable company is an ongoing journey, and our long-term goals are established to guide us in our mission to protect and restore our environment, build economic value, and support and strengthen our communities around the world.

## GHG Emissions

We are committed to providing our customers with products that support safe and healthy environments. We produce 133 low-emission product lines, and since 2005 we have reduced our VOC emissions by 93%, and GHG emissions by 20%. More than 95 percent of standard North American Haworth products are certified GREENGUARD Indoor Air Quality.

## Zero Production Waste to Landfill

Haworth's Global headquarters and all its owned manufacturing facilities for the Commercial Interiors business segment (17 facilities across the globe) have been Zero Waste since 2012.

## Product Development

We take a circular design approach to develop products that support safe and healthy environments. We encompass Design for the Environment strategies and consider environmental, social, and economic impact through alignment with leading certifications, waste-reducing processes, and material choices.

## Product Certifications

Circular design principles are helping us reimagine the way products are designed, packaged, manufactured, and shipped. We continue to be an industry leader in achieving global accredited certifications, providing customers the ability to make informed choices. Certifications offer a common methodology to present the environmental and social characteristics of products.

With 110 certified products certified under the Business and Institutional Furniture Manufacturer's Association Product Sustainability Standard (BIFMA) LEVEL program and 35 products certified under the European LEVEL Certification, Haworth has various options to meet the Canadian Federal Government's requirements.

### North America

- BIFMA LEVEL 2  
20 products
- BIFMA LEVEL 3  
48 products
- GREENGUARD  
9 products
- GREENGUARD Gold  
70 products
- Declare  
10 products
- Cradle to Cradle Certified  
Bronze  
2 products

### Europe

- EUROPEAN LEVEL 3  
35 products
- GREENGUARD  
16 products
- GREENGUARD Gold  
16 products
- SCS Indoor Advantage Gold  
32 products

### Asia-Pacific

- BIFMA LEVEL 2  
30 products
- GREENGUARD  
37 products
- GREENGUARD Gold  
27 products
- GECA  
23 products
- China Type I Environmental Label  
(Certification by Category)
  - › Steel & wood based desking
  - › Steel & plastic based chairs
  - › Upholstered chairs





# LEED and WELL Documentation Services

Haworth products contribute to a wide range of LEED credits which help our customers achieve their LEED certification goals. Most Haworth products are GREENGUARD Indoor Air Quality and/or BIFMA level certified as low-emitting furniture. Most are comprised of pre-and/or post-consumer materials, are designed for recyclability at end of life, and are low-emissions tested.

Haworth panel systems products can also contribute to daylight and views LEED credits. Haworth products are designed to work together within and across products lines to create a more sustainable, adaptable, and economical workplace, and have helped clients achieve first-ever innovation and design credits. This Integrated Palette approach results in interiors that are exceptionally well-suited to adapt as organizations evolve. Extending the life cycle of the workspace in this way not only creates a more sustainable environment for our clients but also makes an enormous impact on their return on investment.

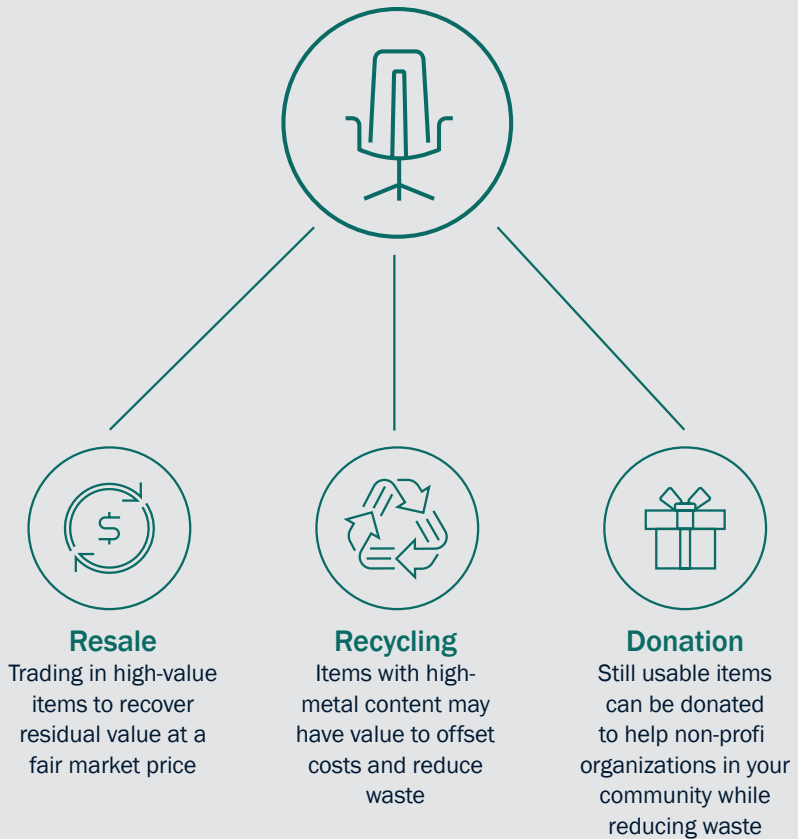
LEED documentation services are free of charge for clients who work with Haworth, and documentation for LEED credit can be easily obtained through any Haworth sales contact. To date, Haworth has helped clients with LEED credit documentation on hundreds of projects.

## Returning, Reusing, Recycling Product

Haworth has teamed up with Green Standards, an organization that provides businesses with responsible, cost-effective solutions to redistribute surplus office furniture and equipment.

They can help to generate measurable value for your company through an extensive international network of non-profits, resellers, recyclers, and commercial movers.

Through our partnership, 1.7 million sq. ft. were transformed in 2022, diverting 1,365 tons (96%) of material from the landfill, reducing environmental impact.



## End of Useful Lifecycle Options

- **Haworth Take-Back program:** Any Haworth product can be shipped back to the manufacturer at the end of its useful life, where it will be responsibly recycled.
- **Resale:** Our team will work with you to find buyers for high-value furniture, equipment, construction, materials, and fixtures
- **Corporate Donation:** We can assist you in locating non-profit organizations nationwide for asset donation. In addition to aiding and engaging with an organization in your community, there may also be tax incentives, depending on where you are located.
- **Recycle Reusable Content:** Depending on the age and condition of the furniture, the best return for some products may be its scrap value. Recycling items with high-metal content reduce environmental impact and offset costs.

Final solutions are typically a combination of all options, with recycling considered as a last resort.

## Community Engagement and Environmental Stewardship

Numerous not-for-profit organizations benefit from monetary and gift-in-kind contributions from Haworth, and we provide all North American employees paid volunteer hours at a non-profit organization of their choice; collectively their time and efforts have a profound impact on local communities.

## Our 2025 Goals

We have set rigorous targets for Haworth’s operations and corporate responsibility. Informed by our commitment to the United Nations Sustainable Development Goals (UN SDGs), our 2025 targets include:

- Design 100% of new products using circular design principles
- Source 100% of wood from sustainable sources
- 100% renewable energy sourcing for electricity for manufacturing facilities
- Zero Waste to Landfill for manufacturing sites and world headquarters
- Elimination of chemicals of concern

## Corporate Responsibility Report

More examples of social and environmental stewardship, along with in-depth information on our strategy and initiatives, are published annually in Haworth’s Corporate Responsibility Report.

[DOWNLOAD THE REPORT](#)





# Canadian Commitment

Haworth is committed to supporting the Canadian economy by creating and investing in opportunities for people and businesses nationwide. We have operated in Canada for over 45 years and remain one of the country’s most prominent office furniture suppliers.

As part of our dedication to actively improving the communities where we live and work, Haworth supports many local charity organizations through donations and assistance. Our members use their paid volunteer hours to help Canadian food banks, homeless shelters, environmental cleanups, and community organizations.

Through our 18 Canadian dealer partners, we service clients across all provinces and territories. We have two large showrooms – in Toronto and Calgary – where we showcase solutions to help Canadians create inspiring workspaces.



**50+** Haworth employees in Canada

**\$8 million** paid in annual Canadian salaries and benefit

**18** dealerships in Canada

**1,000** full-time and contract workers of our Canadian dealers

**33** Canadian suppliers  
Haworth purchases commodities from

**\$7 million** Annual spend on commodities from Canadian suppliers





# Category 1 Workstation Systems

- | Interconnecting Panels System
- | Benching Systems
- | Service Spine (“Beam”) Systems





1A-1

Interconnecting Panels System



Series: Compose Panels

Description:

- 50H panels, fabric tile
- 42H powered panels, fabric + 8H satin etch glass topper
- 50H gallery end panels, laminate

Worksurfaces

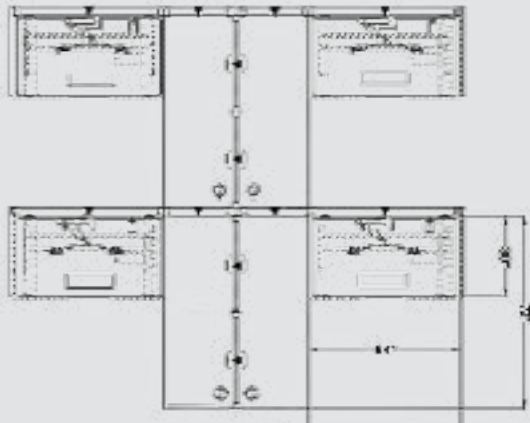
- 72W x 24D
- HPL rectangular laminate top
- 24D worksurface support panel

Upside Height Adjustable Table

- 72W x 24D
- HPL rectangular laminate top
- 24D worksurface support panel

Accessories\* (not included in Cat. 1 price, please refer to Cat. 5)

- LX dual direct monitor arm, additional models and styles available
- Pixo task light, additional models and styles available
- Belong Power module, additional models and styles available



1A-2

Interconnecting Panels System



Series: Compose 120° Panels

Description:

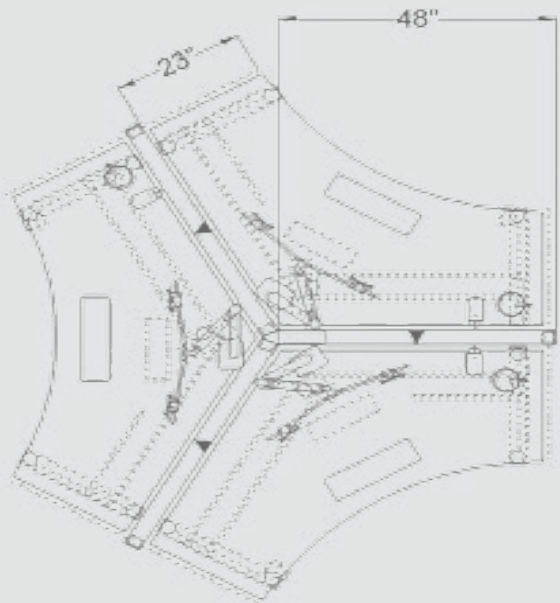
- 50H powered panels, fabric tile

Upside Height Adjustable Table

- 52W x 29D 120°
- HPL laminate top

Accessories\* (not included in Cat. 1 price, please refer to Cat. 5)

- LX dual direct monitor arm, additional models and styles available
- Pixo task light, additional models and styles available
- Belong power module, additional models and styles available





1B-1  
Benching Systems



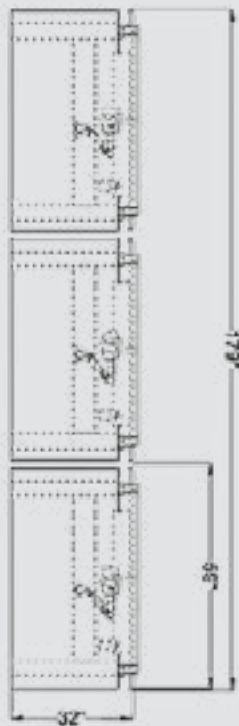
Series: Planes LT Single Sided Bench

Description:

Height Adjustable Bench

- 58W x 29D
- HPL rectangular laminate top
- 58W x 31H Belong Plus back screen, fabric

- Accessories\*** (not included in Cat. 1 price, please refer to Cat. 5)
- LX single monitor arm, additional models and styles available
  - Pixo task light, additional models and styles available
  - Belong Power module, additional models and styles available



1B-2  
Benching Systems



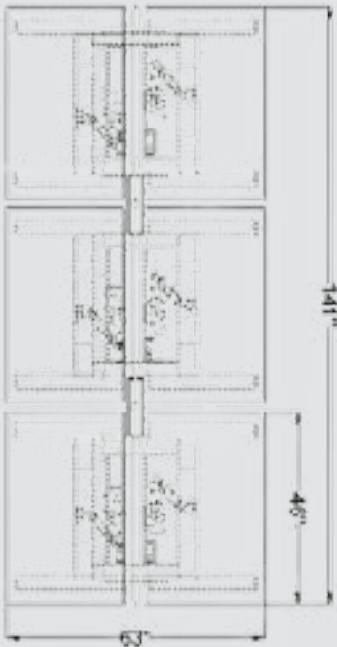
Series: Planes LT Dual Sided Bench

Description:

Height Adjustable Bench

- 46W x 29D
- HPL rectangular laminate top
- 46W x 23H Belong Plus back screen, fabric

- Accessories\*** (not included in Cat. 1 price, please refer to Cat. 5)
- LX single monitor arm, additional models and styles available
  - Talia task light, additional models and styles available
  - Classic power module, additional models and styles available





10-1  
Benching Systems



Series: Compose Beam – Single Sided

Description:

Compose Panels

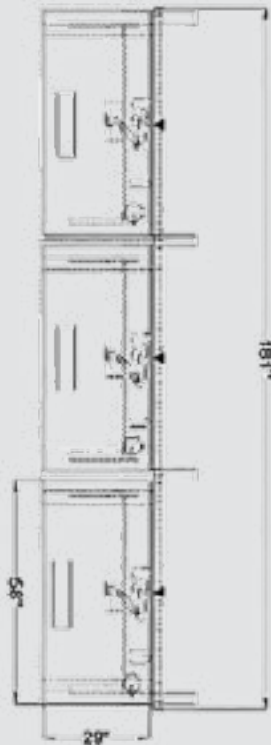
- 26H powered beam panels, fabric
- 60W x 24H Belong Plus back screen, fabric

Upside Adjustable Table

- 58W x 29D
- HPL rectangular worksurface, laminate

Accessories\* (not included in Cat. 1 price, please refer to Cat. 5)

- LX dual direct monitor arm, additional models and styles available
- Pixo task light, additional models and styles available
- Belong Power module, additional models and styles available



10-2  
Benching Systems



Series: Compose Beam – Dual Sided

Description:

Compose Panels

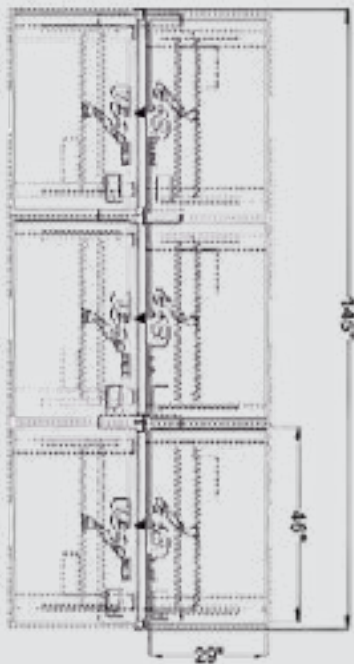
- 26H powered beam panels, fabric
- 48W x 21H center screen, satin etch glass

Height Adjustable Bench

- 46W x 29D
- HPL rectangular laminate top

Accessories\* (not included in Cat. 1 price, please refer to Cat. 5)

- LX single monitor arm, additional models and styles available
- Talia task light, additional models and styles available
- Classic power module, additional models and styles available





10-1

Service Spine (“Beam”) Systems



Series: Compose Connections – Single Sided

Description:

Compose Panels

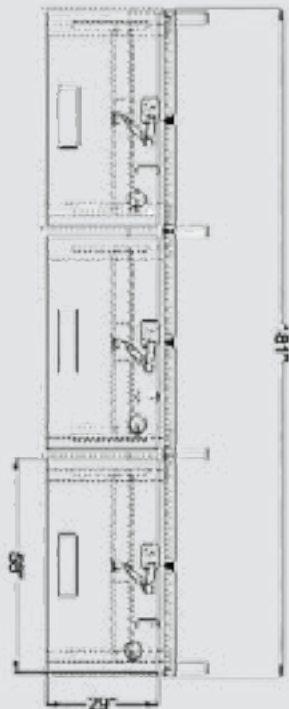
- 26H powered connections panels, fabric
- 60W x 24H Belong Plus back screen, fabric

Upside Adjustable Table

- 58W x 29D
- HPL rectangular laminate top

Accessories\* (not included in Cat. 1 price, please refer to Cat. 5)

- LX dual direct monitor arm, additional models and styles available
- Pixo task light, additional models and styles available
- Belong Power module, additional models and styles available



10-2

Service Spine (“Beam”) Systems



Series: Compose Connections – Dual Sided

Description:

Compose Panels

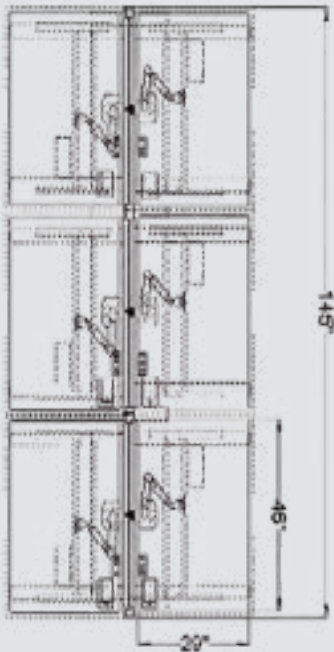
- 26H powered connections panels, fabric
- 48W x 21H center screen, satin etch glass

Upside Height Adjustable Table

- 46W x 29D
- HPL rectangular laminate top

Accessories\* (not included in Cat. 1 price, please refer to Cat. 5)

- LX single monitor arm, additional models and styles available
- Talia task light, additional models and styles available
- Classic power module, additional models and styles available





10-1

Service Spine (“Beam”) Systems



Series: Compose 26H – Single Sided

Description:

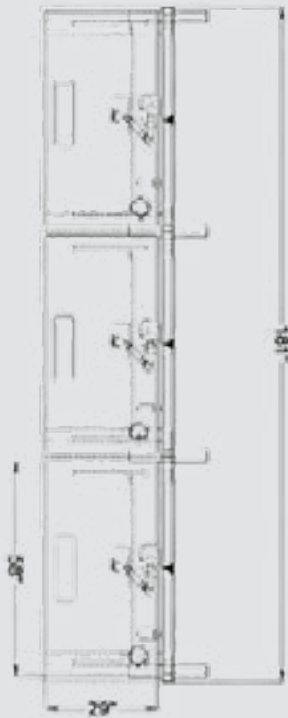
Compose Panels

- 26H powered panels, fabric
- 60W x 24H Belong Plus back screen, fabric

Upside Adjustable Table

- 58W x 29D
- HPL rectangular laminate top

- Accessories\*** (not included in Cat. 1 price, please refer to Cat. 5)
- LX dual direct monitor arm, additional models and styles available
  - Pixo task light, additional models and styles available
  - Belong Power module, additional models and styles available



10-2

Service Spine (“Beam”) Systems



Series: Compose 26H – Dual Sided

Description:

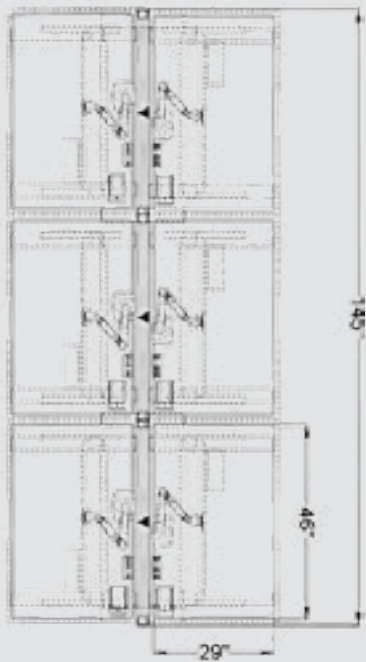
Compose Panels

- 26H powered panels, fabric
- 48W x 21H center screen, satin etch glass

Upside Height Adjustable Table

- 46W x 29D
- HPL rectangular laminate top

- Accessories\*** (not included in Cat. 1 price, please refer to Cat. 5)
- LX single monitor arm, additional models and styles available
  - Talia task light, additional models and styles available
  - Classic power module, additional models and styles available





# Category 2 Work Surface Products

- | Fixed Height Work Surfaces
- | Adjustable Height Work surfaces (2 Supports)
- | Adjustable Height Work surfaces (3 Supports)





2A-1  
Fixed Height Work Surfaces



Series: Jive Table – C-Leg

- Description:
- 48W x 24D x 29H
  - HPL rectangular laminate top
  - Round C-leg, painted base

2A-1  
Fixed Height Work Surfaces



Series: Jive Table – T-Leg

- Description:
- 48W x 24D x 29H
  - HPL rectangular laminate top
  - Round T-leg, painted base

2A-1  
Fixed Height Work Surfaces



Series: Jive Table – Post Leg

- Description:
- 48W x 24D x 29H
  - HPL rectangular laminate top
  - Round post legs, painted base





2A-2

Fixed Height Work Surfaces



Series: Jive Table – C-Leg

Description:

- 72W x 30D x 29H
- HPL rectangular laminate top
- Round C-leg, painted base

2A-2

Fixed Height Work Surfaces



Series: Jive Table – T-Leg

Description:

- 72W x 30D x 29H
- HPL rectangular laminate top
- Round T-leg, painted base

2A-2

Fixed Height Work Surfaces



Series: Jive Table – Post Leg

Description:

- 72W x 30D x 29H
- HPL rectangular laminate top
- Round post legs, painted base





2B1-1

Adjustable Height Work Surfaces (2 Supports)



Series: Upside+ Table – 120°

Description:

- 46W x 46W x 23D
- HPL 120° laminate top
- Dual stage low, programmable paddle
- Non-handed
- C-Legs, painted base

2B1-2

Adjustable Height Work Surfaces (2 Supports)



Series: Upside+ Table – C-Leg

Description:

- 70W x 29D
- HPL rectangular laminate top
- Extended range, programmable paddle
- C-Leg, painted base

2B1-2

Adjustable Height Work Surfaces (2 Supports)



Series: Planes LT Table – C-Leg

Description:

- 70W x 29D
- HPL rectangular laminate top
- Dual stage low, programmable paddle
- C-leg, painted base





2B2-1

Adjustable Height Work Surfaces (3 Supports)



Series: Upside+ Table – Extended

Corner Description:

- 60W x72L x 24/30D
- HPL 90°extended corner, laminate top
- Dual stage low, programmable paddle
- Non-handed
- C-legs, painted base

2B2-2

Adjustable Height Work Surfaces (3 Supports)



Series: Upside+ Table – 120°

Description:

- 58W x 58L x 23D
- 120° HPL laminate top
- Dual stage, low programmable paddle
- Non-handed
- C-Leg, painted base

2B2-2

Adjustable Height Work Surfaces (3 Supports)



Series: Planes LT Table – 120°

Description:

- 58W x 58L x 23D
- 120° HPL laminate top
- Dual stage low, programmable
- Non-handed
- C-Leg, painted base





# Category 3 Filing and Storage Products

- | Bag Drop Storage
- | Storage Lockers (Laminate)
- | Bookcases (Steel)
- | Pedestals (Steel)
- | Storage Cabinet (Steel)
- | Wardrobes (Steel)





3A5-1

Storage Lockers (Laminate)



Series: Compose

Description:

- Attached 4 High Locker Cubbies
- 36W x 18D x 48H
- HPL laminate case and doors
- 2 fixed shelves making 4 equal sized cubbies
- Touch latch
- Locking
- Handed



3A5-2

Storage Lockers (Laminate)



Series: Be\_Hold Be

Description:

- Attached Single Door 4 High Wardrobe
- 12W x 18D x 49H
- TFL laminate case and doors
- 2 coat hooks; 1 coat rod
- Wing pull
- Locking
- Handed



3A5-2

Storage Lockers (Laminate)



Series: Compose

Description:

- Attached Single Door 4 High Wardrobe
- 12W x 18D x 49H
- HPL laminate case and doors
- 1 coat hook
- Touch latch
- Locking
- Handed





3B2-1  
Bookcase (Steel)



Series: X Series

Description:

- Attached 4 High Bookcase
- 30W x 14D x 51.5H
- Steel case and shelves
- Three shelves that adjust
- Interior and shelf match case color
- Non-Handed



3B2-2  
Pedestals (Steel)



Series: X Series

Description:

- Attached Pedestal File/File
- 15W x 17D x 27.5H
- Steel case, top and drawers
- Integrated J-pull
- Locking secures both drawers
- Non- Handed



3B2-2  
Pedestals (Steel)



Series: V Series

Description:

- Attached Pedestal File/File
- 15W x 17D x 27.5H
- Steel case, top and drawers
- Standard integrated pull
- Locking secures both drawers
- Non- Handed



3B2-3  
Pedestals (Steel)



Series: X Series

Description:

- Mobile Pedestal Box/File
- 15W x 17D x 21.5H
- Steel case and drawers
- Integrated J-pull
- Locking secures both drawers
- Cushion top
- Non- Handed





3B2-3

Pedastals (Steel)



Series: V Series

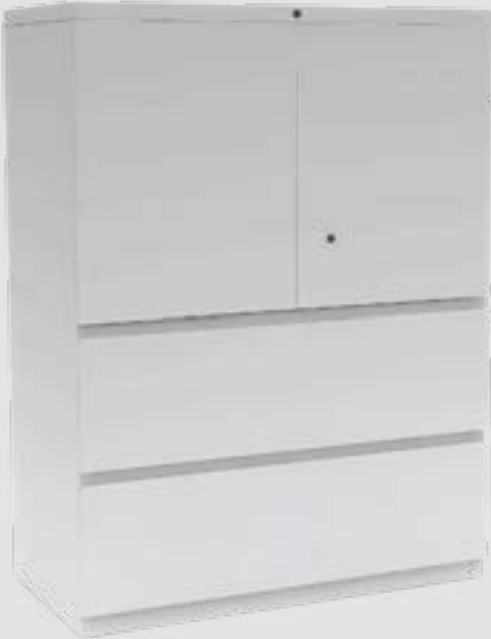
Description:

- Mobile Pedestal Box/Box/File
- 15W x 17D x 21.5H
- Steel case and drawers
- Standard integrated pull
- Locking secures both drawers
- Cushion top
- Non-Handed



3B2-4

Storage Cabinet (Steel)



Series: X Series

Description:

- 5 High Combination Unit
- 36W x 18.75D x 51.5H
- Steel case and doors
- Integrated J-pull
- Touch latch
- Locking
- Non-Handed



3B2-5

Wardrobes (Steel)



Series: X Series

Description:

- Single Locker
- 18W x 18D x 48H
- Steel case and door
- Touch latch door
- Integrated J-pull
- 1 coat hook
- Locking
- Handed



3B2-6

Wardrobes (Steel)



Series: X Series

Description:

- 5 High Wardrobe
- 30W x 18.75D x 63.5H
- Steel case and doors
- Touch latch controls both sides
- 1 coat rod; 1 adjustable shelf
- Locking
- Non-Handed





HAWORTH

# Category 4 Phone Booth and Pods

| Pod, Work (Group)





4D-1

Pod, Work (Group)



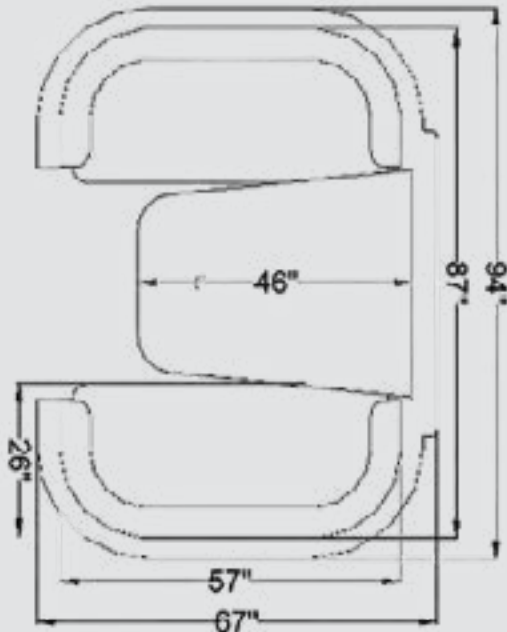
Series: Openest

Description:

- Conference Booth
- 94W x 68D x 58H Overall
- 5 screen booth, 2 sofas, fabric + steel
- 40Wx46Dx29H worksurface, laminate
- Non-Handed

Accessories

- LX dual direct monitor arm, additional models and styles available
- Classic power module, additional models and styles available



4D-1

Pod, Work (Group)



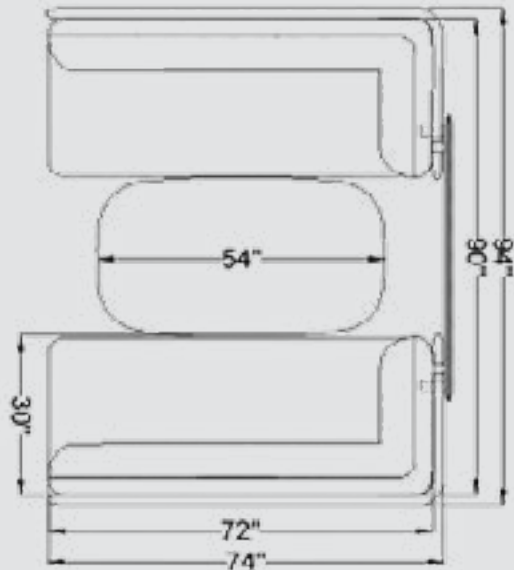
Series: Cabana Booth

Description:

- Two Seat Collaborative
- 74W x 94D x 54H Overall
- (2) 72W x 30D x 54H collaborative sofas with attached back screen (left- and right-handed options shown)
- (1) 52W x 30D x 28H Pip table, laminate + steel
- Handed

Accessories

- Talia task light, additional models and styles available
- Belong Power module, additional models and styles available





HAWORTH

# Category 5 Ancillary Products

- | Power Modules, Freestanding
- | Power Modules, Mounted
- | Task Lights
- | Worksurface Privacy Screens, Free-Standing





501-1

Power Modules, Freestanding



Series: Collaborative Power Tower

Description:

- 11Wx30HCord Length 108"
- Power Station, 3 Receptacles, 1 USB-A and 1 USB-C18w
- Standard Finishes



502-1

Modules, Mounted



Series: Classic Power Module

Description:

- 5Wx2H
- Cord Length 120"
- 3 Port, 2 Receptacle, 1 USB
- Vertical Mount
- White Finish



502-1

Power Modules, Mounted



Series: Belong Power Module

Description:

- 4Wx4H
- Cord Length 108"
- Belong Power Cube, 1 Cir., 3 Receptacles, Dual USB-A, 18W, USB-C
- Adjustable Bracket
- White Finish





502-2  
Power Modules, Mounted



Series: Classic Power Module

Description:

- 5W x 2H
- Cord Length 120"
- 3 Port, 2 Receptacle, 1 USB
- Under worksurface mount
- White Finish

502-2  
Power Modules, Mounted



Series: Belong Power Module

Description:

- 4W x 4H
- Cord Length 108"
- Belong Power Cube, 1 Cir., 3 Receptacles, Dual USB-A, 18W, USB-C
- Under worksurface mount
- White Finish





5D-2

Task Lights



Series: Pablo Designs Talia Table Light

- Description:**
- 3.9W x 6.4D x 13.8”H
  - LED Table Light
  - Full-range dimming control via ADA-Compliant optical switch
  - 360-degree arm rotation; 180-degree shade rotation
  - Table Light has wireless charging and USB port
  - Black Finish

5D-2

Task Lights

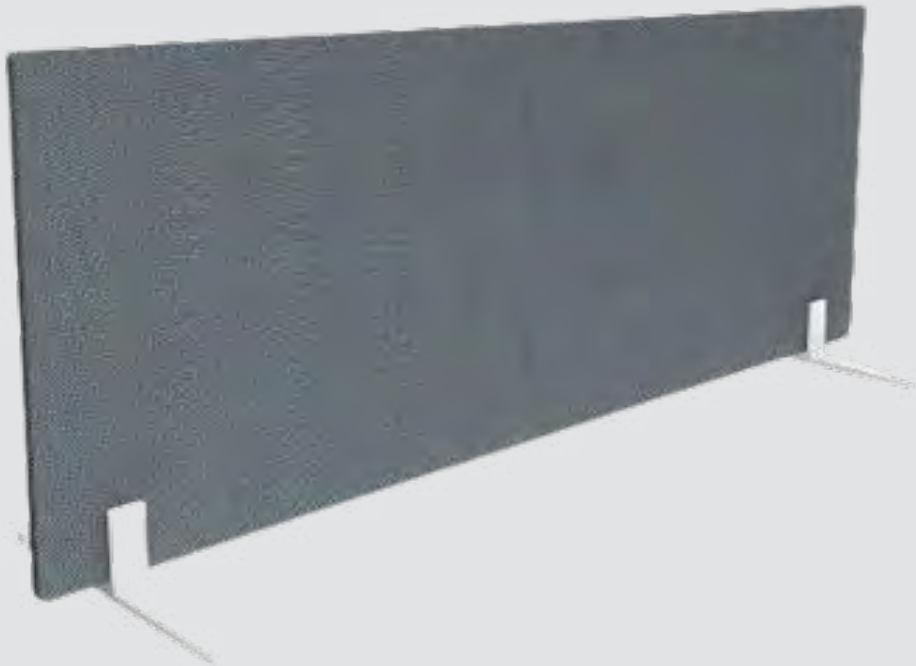


Series: Pablo Designs Pixo Plus Table Light

- Description:**
- 3.9W x 6.4D x 13.8H
  - Advanced LED array
  - Full-range dimming control via ADA-compliant optical switch
  - 360-degree arm and shade rotation; 180-degree arm tilt
  - Built-in wireless charging and USB port
  - Standard Finishes

5E1-1

Worksurface Privacy Screens, Free-Standing



Series: Belong Center Screen

- Description:**
- 48W x .5D x 14H
  - Center Screen Fabric
  - Painted Metal Brackets





5E1-2

Worksurface Privacy Screens, Free-Standing



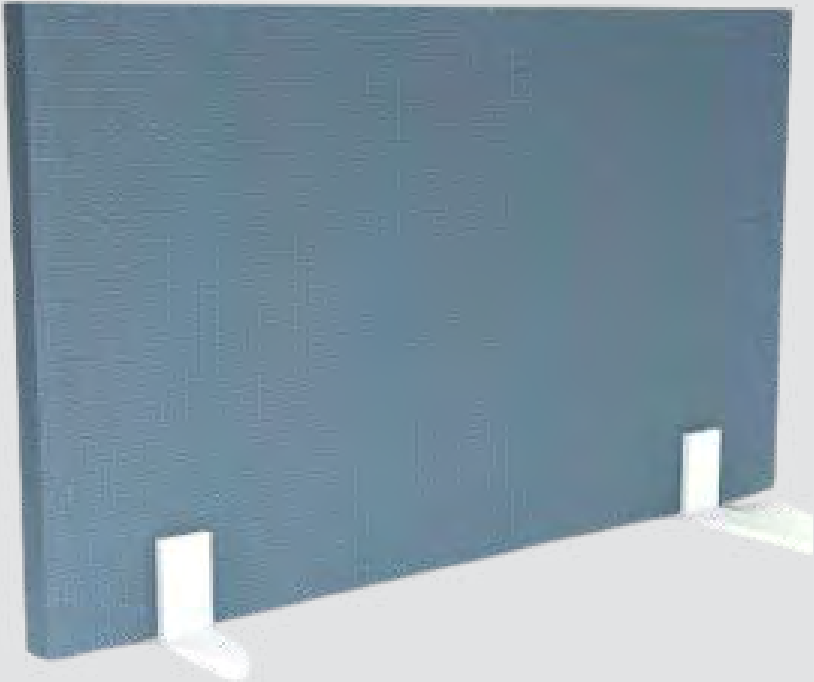
Series: Belong Territory Screen

Description:

- 24W x .5D x 12H
- Laminate Screen

5E1-2

Worksurface Privacy Screens, Free-Standing



Series: Belong Plus Center Screen

Description:

- 24W x .5D x 14H
- Center Fabric Screen
- Painted Metal Brackets





HAWORTH

# Category 6 Collaborative Products

- | Media Carts and Mobile Monitor Display Mounts
- | Mobile Dry Erase Boards
- | Tablet Armchairs, Classroom
- | Meeting Tables, Collaborative
- | Training Tables





6A3-1

Media Carts and Mobile Monitor Display Mounts



Series: Ergotron Neo-Flex Mobile Media Center

Description:

- Mobile Media Center, Capacity 90-120 lbs.
- Portrait-to-landscape rotation, 20"
- Height-adjustment and 20 degrees independent display tilt
- Seating and Standing audiences

6A4-1

Mobile Dry Erase Boards



Series: Planes Standard Easel – Markerboard

Description:

- 45W x 28D x 75H
- Mobile Easel, Standard with casters
- Painted Metal Easel Frame Marker tray and paper pad pins
- 2-sided laminate Markerboard – Glossy White, centerboard



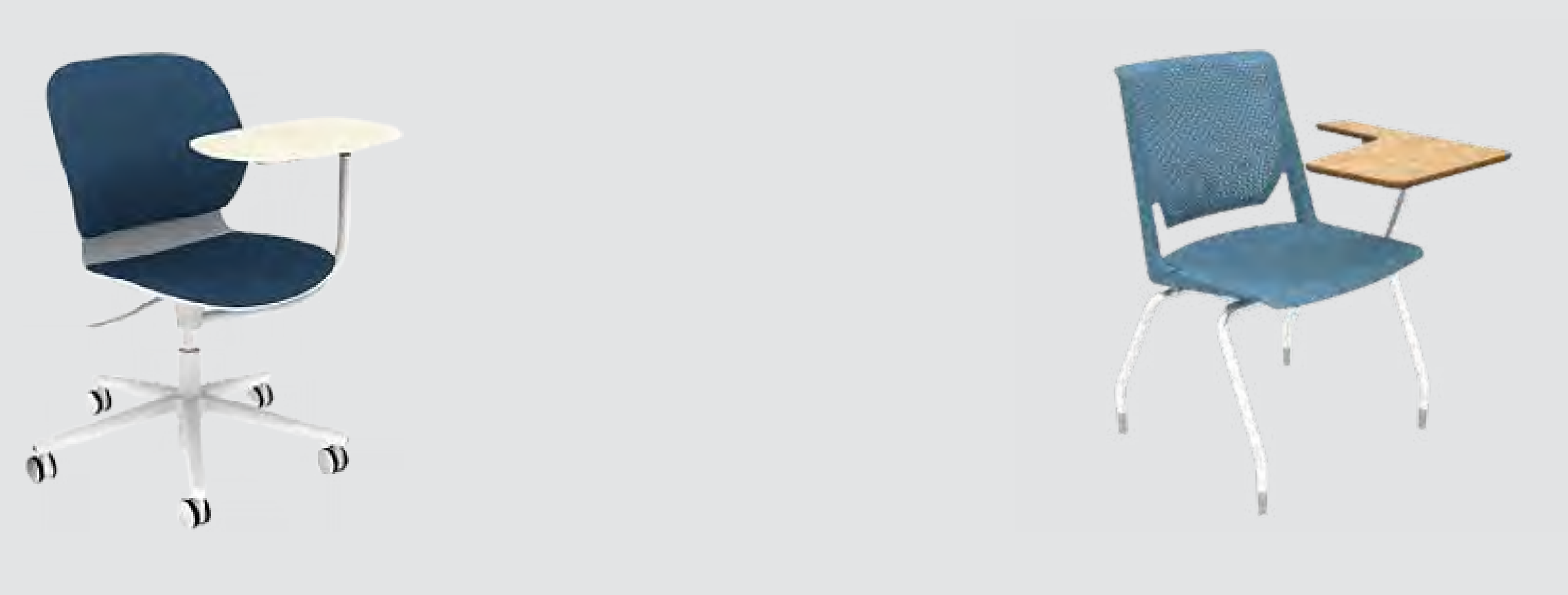


606-1

Tablet Armchairs, Classroom Maari

606-2

Tablet Armchairs, Classroom Very Tablet Side Chair



Series: Maari Conference Chair - Tablet Arm

Description:

- 28.5Wx28.5Dx32H
- Armless – Tablet Arm
- Polymer seat and back
- Fabric pad seat and back
- Pneumatic seat height adjustment
- 5-Star Base

Series: Very Side Chair with Tablet Arm

Description:

- 22Wx22.3Lx33.9H
- Armless – with Tablet Arm
- Perforated polymer seat and back
- 4-Leg metal base





6D4-1

Meeting Tables, Collaborative Planes Table



Series: Planes Round Table

Description:

- 36Wx36Dx40H
- HPL Laminate Top
- 4-Leg painted metal base

6D4-2

Meeting Tables, Collaborative Planes Table



Series: Planes Rectangle Table

Description:

- 60Wx30Dx40H
- HPL Laminate Top
- Disc painted metal bases





6D8-1

Training Tables, Planes Training Tables



Series: Planes Training Table

Description:

- 60Wx24Wx29H
- HPL Laminate Top
- Flip Top
- Casters, locking and non-locking

6D8-2

Training Tables, Planes Training Tables with Modesty Panel



Series: Planes Training Tables with Modesty Panel

Description:

- 60Wx24Wx29H
- HPL Laminate Top with Modesty panel
- Flip Top
- Power
- Casters, locking and non-locking





